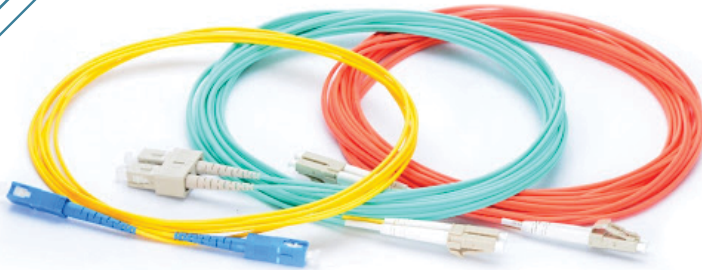


Fiber Patch Cords



High quality zirconia ferrules
PC radius ferrule tip
100% insertion loss tested
Low mated pair insertion loss
Precision engineered plastic SC housings
Wide temperature operating range
UL-V0 flammability rating on polymer materials

PRODUCT PROFILE

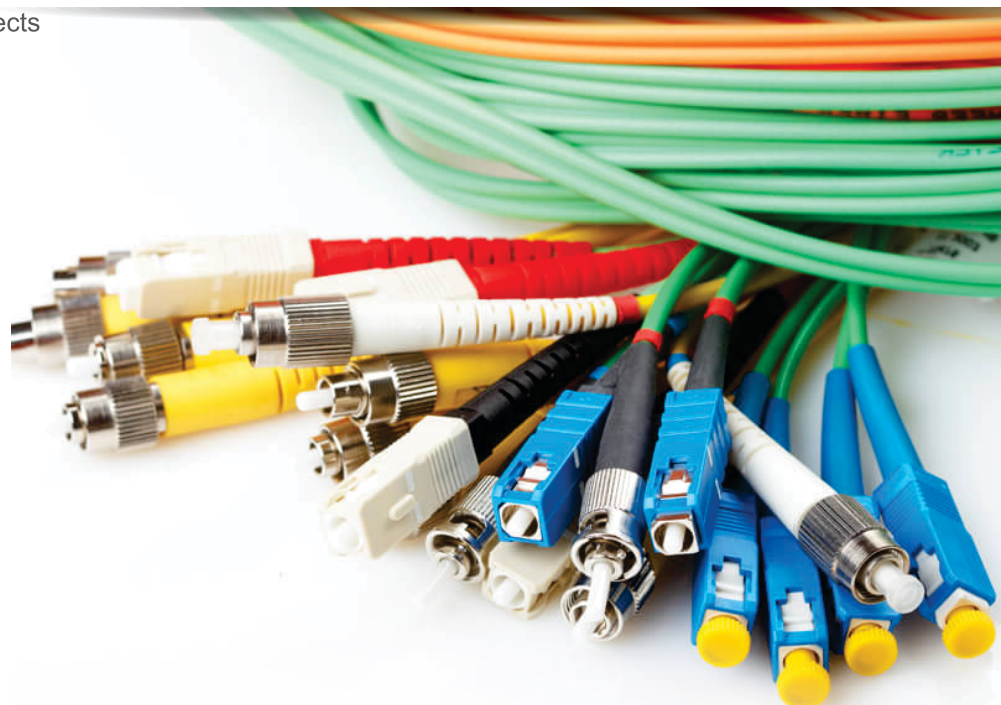
AE Connect fiber patch cords provide superior connections from the work station to the wall outlet, or from active equipment to the patch panel. These applications include connecting to network interface

cards (NIC), or to a fiber hub, router or switch. All AE Connect fiber patch cords are 100% verified for loss. Available with zipcord or simplex 62.5/125, 50/125 MM or SM patch cables. We offer ST-style, SC style,

MT-RJ or LC connector styles. All patch cords are factory polished and 100% optically tested for superior performance.

APPLICATION

- Intra-building Backbone LAN cross connects
- Local and Wide Area Networks
- Data Transmission
- Video systems
- Remote optical communications
- Process control



Fiber Patch Cords

TECHNICAL SPECIFICATION

| | | | |
|--------------------------|-------------------|---------------------------------------------------|------------------------------------------------|
| Connector Type | | SC/LC/ST/FC/MTRJ | |
| Optical Fiber | | Single- Mode | Multi-Mode |
| Cable Type | | LSZH | |
| | | 3.0mm / 2.0mm | |
| Cable Color | | Single Mode - Yellow & Multi-Mode - Orange / Aqua | |
| Length | | 3m,5m Other Length on request | |
| Optical Specification | Insertion Loss | Typical:≤0.2dBm Max. 0.3dB MTRJ: Max. 0.5dB | Typical:≤0.2dBm Max. 0.3dB MTRJ: Max. 0.5dB |
| | Return Loss | PC:≤45dB, UPC≤50 dB,APC≤60dB | ≤ 25dB |
| Mechanical Specification | Connector Ferrule | Ceramic | |
| | Repeatability | ≤ 0.2dB 200 times mating cycles | |
| Working Temperature | | -10°C- +70 °C | |
| Storage Temperature | | -20°C- +70 °C | |

Fiber Patch Cords

ORDERING INFORMATION

| | |
|---------------|-----------------------------------------------------------|
| AE-FPSM-SC-SC | Fiber SC/UPC - SC/UPC Patch Code Duplex 3 MTR Single Mode |
| AE-FPSM-LC-LC | Fiber LC/UPC - LC/UPC Patch Code Duplex 3 MTR Single Mode |
| AE-FPSM-FC-FC | Fiber FC/UPC - FC/UPC Patch Code Duplex 3 MTR Single Mode |
| AE-FPSM-ST-ST | Fiber ST/UPC - ST/UPC Patch Code Duplex 3 MTR Single Mode |
| AE-FPSM-SC-LC | Fiber SC/UPC - LC/UPC Patch Code Duplex 3 MTR Single Mode |
| AE-FPSM-SC-FC | Fiber SC/UPC - FC/UPC Patch Code Duplex 3 MTR Single Mode |
| AE-FPSM-SC-ST | Fiber SC/UPC - ST/UPC Patch Code Duplex 3 MTR Single Mode |
| AE-FPSM-LC-LC | Fiber LC/UPC - LC/UPC Patch Code Duplex 3 MTR Single Mode |
| AE-FPSM-LC-FC | Fiber LC/UPC - FC/UPC Patch Code Duplex 3 MTR Single Mode |
| AE-FPSM-LC-ST | Fiber LC/UPC - ST/UPC Patch Code Duplex 3 MTR Single Mode |
| AE-FPMM-SC-SC | Fiber SC/UPC - SC/UPC Patch Code Duplex 3 MTR Multi Mode |
| AE-FPMM-LC-LC | Fiber LC/UPC - LC/UPC Patch Code Duplex 3 MTR Multi Mode |
| AE-FPMM-FC-FC | Fiber FC/UPC - FC/UPC Patch Code Duplex 3 MTR Multi Mode |
| AE-FPMM-ST-ST | Fiber ST/UPC - ST/UPC Patch Code Duplex 3 MTR Multi Mode |
| AE-FPMM-SC-LC | Fiber SC/UPC - LC/UPC Patch Code Duplex 3 MTR Multi Mode |
| AE-FPMM-SC-FC | Fiber SC/UPC - FC/UPC Patch Code Duplex 3 MTR Multi Mode |
| AE-FPMM-SC-ST | Fiber SC/UPC - ST/UPC Patch Code Duplex 3 MTR Multi Mode |
| AE-FPMM-LC-LC | Fiber LC/UPC - LC/UPC Patch Code Duplex 3 MTR Multi Mode |
| AE-FPMM-LC-FC | Fiber LC/UPC - FC/UPC Patch Code Duplex 3 MTR Multi Mode |
| AE-FPMM-LC-ST | Fiber LC/UPC - ST/UPC Patch Code Duplex 3 MTR Multi Mode |