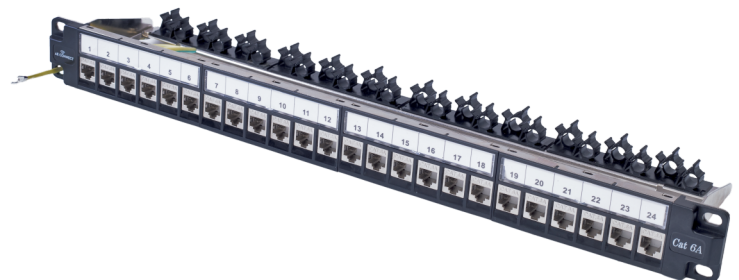
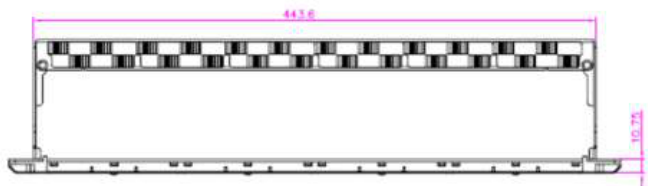


AE-CAT6APP-SFTP

24 Port CAT 6 UTP Loaded Patch Panel

FEATURES

- Fully loaded with 24 ports
- Loaded with Individual UTP keystone
- Entire steel outer frame, with plastic powder clad
- Compatible for termination with 22-26 AWG 4 pair UTP cable
- High quality thick rear cable management bar
- 1U size



- ◆ Entire steel outer frame 24 ports SFTP patch panel;
- ◆ SFTP Cat.6a Toolless keystone jacks assembled in this panel;
- ◆ Elegant design with nickel plating on the back of the patch panel;
- ◆ The back cable manager can be removed from the panel easily;
- ◆ All kinds of cables with different dimensions can be fixed on the patch panel. Fit for Horizontal Distribution in the equipments room and equipments connecting;
- ◆ Smart label holder design, easy to open and manage

AE-CAT6APP-SFTP
24 Port CAT 6 UTP Loaded Patch Panel
TECHNICAL SPECIFICATION

Standard	
C6/C6A permanent link:	Conform to ANSI/TIA/EIA-568 b.2-1.
Electrical	
Voltage rating	125 VAC RMS
Current rating	1.5 AMP
Contact resistance	20 Million HMS max
Insulation resistance	100 MEGOHMS min. @ 500 VDC
Dielectric strength	750 VAC RMS 60 Hz, 1 min
Mechanical	
Housing Material	ZINC ALLOY
INSERT MATERIAL	Flame retardant PC110
PCB MATERIAL	FR-4 T=1.2MM
Contact MATERIAL	Phosphor bronze stamp pin T=0.35MM
IDC Material	Phosphor bronze T=0.5mm with Plating
RJ 45 Jack life	750 cycles min
IDC life: 200 times min	Wire: AWG 22-24
TIA Cat. 6 perm Link test	Worst pair next margin ≥ 7 dB
TIA Cat. 6A perm Link test	Worst pair next margin ≥ 5 dB
Retentiveness of insertion structure	50N 60 \pm 5s.

ENVIRONMENT OF ADAPTATIONS

Storage Temperature	-40° ~ 70°
Operation Temperature	-10° ~ 60°

ORDERING INFORMATION

AE-CAT6APP-SFTP	24Port Cat6A SFTP Toolless Patch Panel
-----------------	--