



www.aeconnect.co.in

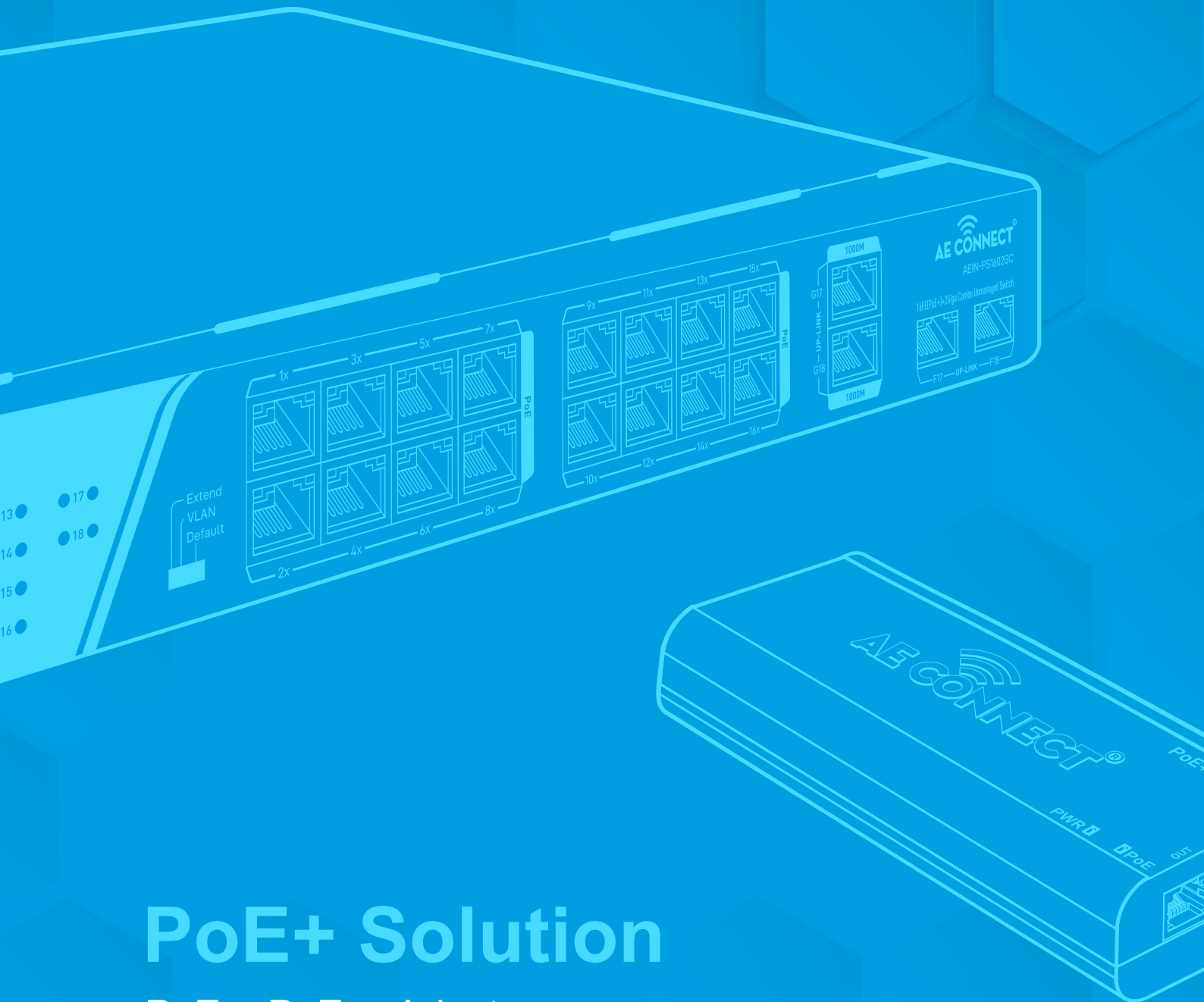


INTRODUCTION

AE Connect Empowered by the technology of connectivity headquartered in Gujarat is an Indian manufacturer of networking and connectivity products. From relatively modest beginnings in 2005 by a highly motivated individual, we have rich experience in providing high-class networking products and solutions. The company has grown and built its credibility over the last 15 years with its best-in-class quality products that are high performance and are extremely user-friendly.

AE Connect's products are focused on the “Internet of Things” such as CCTV surveillance, Wi-Fi coverage, VoIP phone system, Smart Home, Smart Buildings, etc. The products have successively entered in India and overseas with a wide network of 200+ dealers and distributors. Our switching solutions are optimized for a wide range of industries including service providers, financial services, Government and public sectors. Our products are useful in various application areas like Telecom & Mobile operators, Fiber network operators and various other Network operators to achieve their needs and demands.

Our infrastructure is equipped with advanced machines and appliances to fulfil the various demands of our clients. AE Connect has its in-house Research & Development unit which specializes in design, development and customization of Networking Passive Products i.e. Copper & Fiber and also IP surveillance for large and medium scale Industries.



PoE+ Solution

PoE+, PoE++ Injectors

PoE Extender

Unmanaged PoE+ Switches

L2 Managed PoE+ Switches

Industrial PoE+ Switches

**AE CONNECT
LAUNCHING**



भारत में निर्मित

**DESIGNED AND
MANUFACTURED IN INDIA**



AEIN-PS1010PRO

**EXPERIENCE THE QUALITY WITH EXCELLENCE.
EXCLUSIVELY DESIGNED & MANUFACTURED IN INDIA.**

The all-new AEIN-PS1010PRO is an 8-Port FE PoE+ Switch with 2 Gigabit Uplink that supports IEEE 802.3 af/at Standard and is able to offer more flexible choices for long-range transmission, extending the distance up to 250m in the extend mode.



AEIN-PIG301

- 1x 10/100/1000 PoE+ Port
- 1x 10/100/1000 RJ45 Uplink Port
- Total Power Budget 35w
- AF/AT Standard Supported



AEIN-PIG901

- 1x 10/100/1000 PoE+ Port
- 1x 10/100/1000 RJ45 Uplink Port
- Total Power Budget 90w
- AF/AT/BT (Class-4) Standard Supported



A

EIN-PEO2

- Supply power to IP network cameras through Cat5e/Cat6 cables (PoE)
- Compatible with IEEE 802.3af/at PSE devices

- Support 10/100M data transmission through RJ45 port
- Auto-negotiation and auto-MDIX fast Ethernet RJ45 port
- Both mid-span (4/5+, 7/8-) and end-span (1/2+, 3/6-)
- IEEE802.3af/at; IEEE 802.3i; IEEE 802.3u; IEEE 802.3x Flow Control; IEEE 802.3af/at DTE Power via MDI
- 100Base-TX : Cat5e/Cat6 UTP(.100 meters)
- Store-And-Forward architecture
- 2x RJ45 PoE+ ports; maximum 30W for single PoE port
- Front-end receiving and Back-end supply power



AE-PS104G-F

- 4x 10/100 /1000 PoE+ Port
- 1x 10/100/1000 RJ 45 Uplink Port
- 1x 10/100/1000 SFP (Fiber) Uplink Port
- Total Power Budget 65W
- AF/AT PoE Standard Supported
- Internal Power Supply



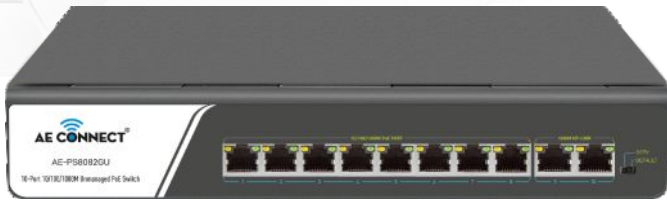
AE-PS104G-FF

- 4x 10/100 /1000 PoE+ Port
- 2x 10/100/1000 SFP (Fiber) Uplink Port
- Total Power Budget 65W
- AF/AT PoE Standard Supported
- Internal Power Supply



AEIN-PS1010PRO

- 8x 10/100 PoE+ RJ-45 Port
- 2x 10/100/1000mbps RJ-45
- Up-Link Port
- 250MTR Supported
- V-Lan Supported
- IEEE.802.3 AF/AT Supported
- Total Power Budget 120w



AE-PS8082GU

- 8 PORT GIGABIT POE+ SWITCH
- 8x 10/100 /1000 PoE+ Port Switch
- 2x 10/100/1000 RJ 45 Uplink Port
- Total Power Budget 120W
- AF/AT PoE Standard Supported
- Internal Power Supply



AE16PSN2GC

- 16x 10/100 PoE+ Switch Port
- 2x 10/100/1000 RJ 45 & Fiber Uplink Port
- Long Range up to 250 Mtr Supported
- Total Power Budget 200W
- AF/AT PoE Standard Supported
- Internal Power Supply
- Rack Mounted



AEIN-PSG1604GU

- 16 x 10/100/1000Mbps PoE+ ports and 4 x Giga Uplink (2 Giga Rj45 and 2 SFP)
- IEEE802.3af/at PoE+ Compliant
- Total power budget of 200W
- 10/100/1000Mbps Auto MDI/MDIX
- Long Range up to 250 Mtr Supported
- 6kv surge protection
- Rack mount installation with fanless design



AE-PS8082SFT-M

- 8x 10/100 /1000 PoE+ Port
- 2x 10/100/1000 SFP (Fiber) Uplink Port
- 1 console port
- Fully L2 Manage Switch
- Total Power Budget 120W
- AF/AT PoE Standard Supported



AE-PS242SFT-M

- 24x 10/100/1000 PoE+ Port
- 4x 10/100/1000 RJ 45 & Fiber combo Uplink Port
- Fully L2 Managed
- Total Power Budget 400W
- AF/AT PoE Standard Supported
- Internal Power Supply
- Rack Mounted
- Long Range up to 250 Mtr Supported



AEIN-PSG484GF-M

- 48*10/100/1000Mbps PoE ports and 4* 1000Mbps SFP Uplink, 1 Console port
- IEEE802.3af/at (PoE) Compliant Total
- Total power budget of 400W and 30W RJ45 port supports 10/100/1000Mbps Auto MDI/MDIX
- Support remote web managed
- Designed for Wifi AP and IP Security camera, VoIP etc
- Rack mount installation with fanless design



AEIN-PS24FE2GC

- 24Port 10/100Mbps PoE Switch with 2 1000M Combo Uplink
- IEEE802.3af/at Power over Ethernet (PoE) Compliant
- Total power budget of 300W and 30W for all single PoE ports
- Rack mount installation with fanless design
- Designed for Wifi AP and IP Security camera etc
- Plug and play, No configuration required



INDUSTRIAL RING MANAGED POE+ SWITCH

- 8*10/100/1000BASE-T Gigabit Ethernet RJ45 ports
- 2 100/1000BASE-X mini-GBIC/SFP slots
- RJ45 interface for basic management and setup
- Full Layer 2 Web management
- DIN rail and wall-mount design
- Contact Discharge 8KV DC; Air Discharge 15KV DC
- -40 to 85 degrees C operating temperature



AE700-IPS4GE1GE1GF

- 4*10/100/1000Mbps PoE ports with 1*1000Mbps Ethernet and 1.25Gbps SFP
- IEEE802.3af/at (PoE) Compliant
- RJ45 port supports 10/100/1000Mbps Auto MDI/MDIX
- DIN rail mounting installation
- Designed for industrial environment
- Protect from lighting surges and electrical hazards
- -40 to 85 degrees operating temperature
- IP40 Industrial enclosure



AE700-IPSGE2GF-M

- 8*10/100/1000Mbps PoE ports with 2 1000Mbps SFP
- IEEE802.3af/at (PoE) Compliant
- RJ45 port supports 10/100/1000Mbps Auto MDI/MDIX
- Din Rail mounting installation
- Protect the device from lighting surges
- Support remote web managed, VLAN and storm control and IPV6 management etc.
- -40 to 85 degrees operating temperature
- IP40 Industrial design with dual power input



AE700-IPS8GE1GE1GF

- 8*10/100Mbps PoE ports with 1 gigabit RJ45 and 1 SFP
- IEEE802.3af/at (PoE) Compliant
- RJ45 port supports 10/100Mbps Auto MDI/MDIX
- DIN rail mounting installation
- Designed for industrial environment
- Protect from lighting surges and electrical hazards
- -40 to 85 degrees operating temperature
- IP40 Industrial enclosure



AE700-IPS8GE2GF-M

- 8*10/100/1000Mbps PoE ports with 2 1000Mbps SFP
- IEEE802.3af/at (PoE) Compliant
- RJ45 port supports 10/100/1000Mbps Auto MDI/MDIX
- DIN rail mounting installation
- Designed for industrial environment
- Protect from lighting surges and electrical hazards
- -40 to 85 degrees operating temperature
- Ip40 Industrial enclosure



AE700-IPS8GE4GF-M

- 8*10/100/1000Mbps PoE ports with 4*1000Mbps SFP
- IEEE802.3af/at (PoE) Compliant
- RJ45 port supports 10/100/1000Mbps Auto MDI/MDIX
- DIN rail mounting installation
- Designed for industrial environment
- Protect from lighting surges and electrical hazards
- -40 to 85 degrees operating temperature
- IP40 Industrial enclosure



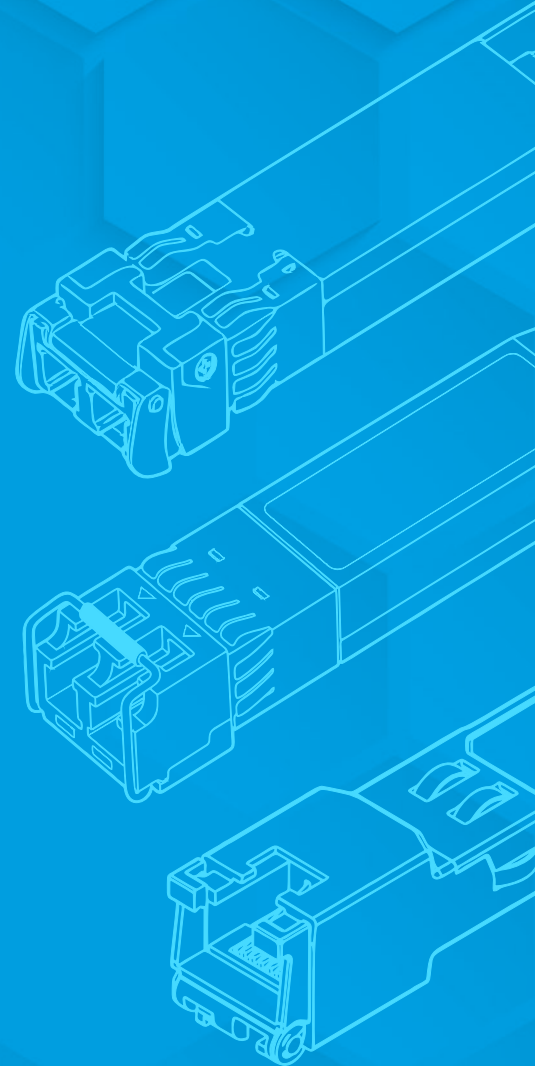
AE700-IPS16GE2GF-M

- 16*10/100/1000 Mbps PoE ports
- IEEE802.3af/at (PoE) Compliant with
- 2 Gigabit SFP Uplink
- DIN rail mounting installation
- Designed for the industrial environment
- Protect from lightning surges and electrical hazards
- -40 to 85 degrees operating temperature
- Ip40 Industrial design with dual power input



AE700-IPS24GE4GC-M

- 24*10/100/1000 Mbps PoE ports
- IEEE802.3af/at (PoE) Compliant with 4
 - Gigabit SFP Uplink
- Rack mount installation
- Designed for the industrial environment
- Protect from lightning surges and electrical hazards
- -40 to 85 degrees operating temperature
- Ip40 Industrial design with dual power input



Fiber Active Products

Media Converters

Fiber Switch

SFP Module



AE-110CS

- Single Mode 1310/1550
- 10/100Mbps auto-sensed, easily upgrade
- Providing two 10M/100Mbps TX ports
- Full-duplex and half-duplex auto-sensed
- MDI/MDI-X Auto Negotiation
- 10/100Mbps store-and-forward
- Supporting extra-long packets up to 1600 bytes



AE-110CM

- Multi Mode
- 10/100Mbps auto-sensed, easily upgrade
- Providing two 10M/100Mbps TX ports
- Full-duplex and half-duplex auto-sensed
- MDI/MDI-X Auto Negotiation
- 10/100Mbps store-and-forward
- Supporting extra-long packets up to 1600 bytes



AE-210CS

- Single Mode 1310/1550
- 10/100/1000Mbps auto-sensed, easily upgrade
- Full-duplex and half-duplex auto-sensed
- MDI/MDI-X Auto Negotiation
- 10/100/1000Mbps store-and-forward
- Packet size up to 1916bytes



AE-210CM

- Multi Mode
- 10/100/1000Mbps auto-sensed, easily upgrade
- Full-duplex and half-duplex auto-sensed
- MDI/MDI-X Auto Negotiation
- 10/100/1000Mbps store-and-forward
- Packet size up to 1916bytes



AE-100CS A & B

- Single Mode
- 10/100Mbps auto-sensed, easily upgrade
- Providing two 10M/100Mbps TX ports
- Full-duplex and half-duplex auto-sensed
- MDI/MDI-X Auto Negotiation
- 10/100Mbps store-and-forward
- Supporting extra-long packets up to 1600 bytes



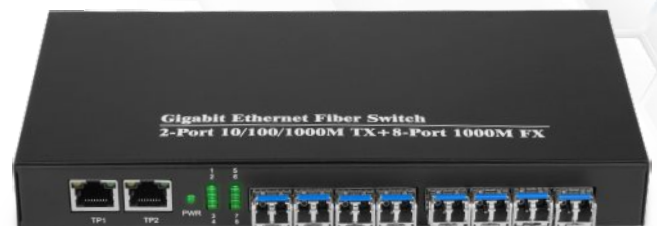
AE-100CSG A & B

- Single Mode
- 10/100/1000Mbps auto-sensed, easily upgrade
- Full-duplex and half-duplex auto-sensed
- MDI/MDI-X Auto Negotiation
- 10/100/1000Mbps store-and-forward
- Packet size up to 1916 bytes



AE-100F

- Ethernet standards IEEE802.3, 10/100Base-TX/1000Base-TX and 1000Base-FX
- Supported Ports: LC for optical fiber; RJ45 for twisted pair
- Up to 6 LEDs
- 512 kb data storage integrated, and 802.1X original
- MAC address authentication supported



AE-FSG-3208

- Switch Ethernet signals among 10/100/1000M UTP port (T) and 8 1000M Optical Fiber Interfaces (X)
- Auto negotiation function supports UTP ports to auto 10/100/1000M and Full Duplex/Half Duplex.
- The SFP slot supports 1000M and Full Duplex mode.



AEXS-BI5312-20D/ AEXS-BI3512-20D

- Rate : 1.25Gbps/1.063Gbps
- Transmission distance : 20kms
- Channel : Simplex
- 1310/1550nm DFB laser and PIN receiver
- The transceiver consists of three sections: a DFB laser transmitter, a PIN photodiode integrated with a trans-impedance preamplifier (TIA) and MCU control unit.
- All modules satisfy class I laser safety requirements



AE-SMDG-LC20

- Rate : 1.25Gbps/1.063Gbps
- Transmission distance : 20kms
- Channel : Duplex
- The transceiver consists of three sections: a DFB laser transmitter, a PIN photodiode integrated with a trans-impedance preamplifier (TIA) and MCU control unit.
- All modules satisfy class I laser safety requirements.



AE-SFP-G-RJ45

- Hot-swappable interface lets you install and uninstall without shutting down
- Provides 10/100/1000 Mbps throughput up to 80 to 90 Mtr via Cat6 cabling
- Auto-sensing RJ45 port adjusts to match data speeds



AE-SFP+BIDI-10G-LR

- Up to 20 km transmission on SMF
- Up to 10.3125Gbps
- 1270/1330nm DFB laser and PIN receiver.
- SFI electrical interface
- 2-wire interface for integrated Digital Diagnostic monitoring
- SFP+ MSA package with single LC connector
- Hot pluggable



AE-SFP+DLX-10G-LR

- Up to 20 km transmission on SMF
- Up to 10.3125Gbps
- 1310nm DFB laser and PIN receiver
- SFI electrical interface
- 2-wire interface for integrated Digital Diagnostic monitoring
- SFP+ MSA package with duplex LC connector
- Hot pluggable
- Very low EMI and excellent ESD protection



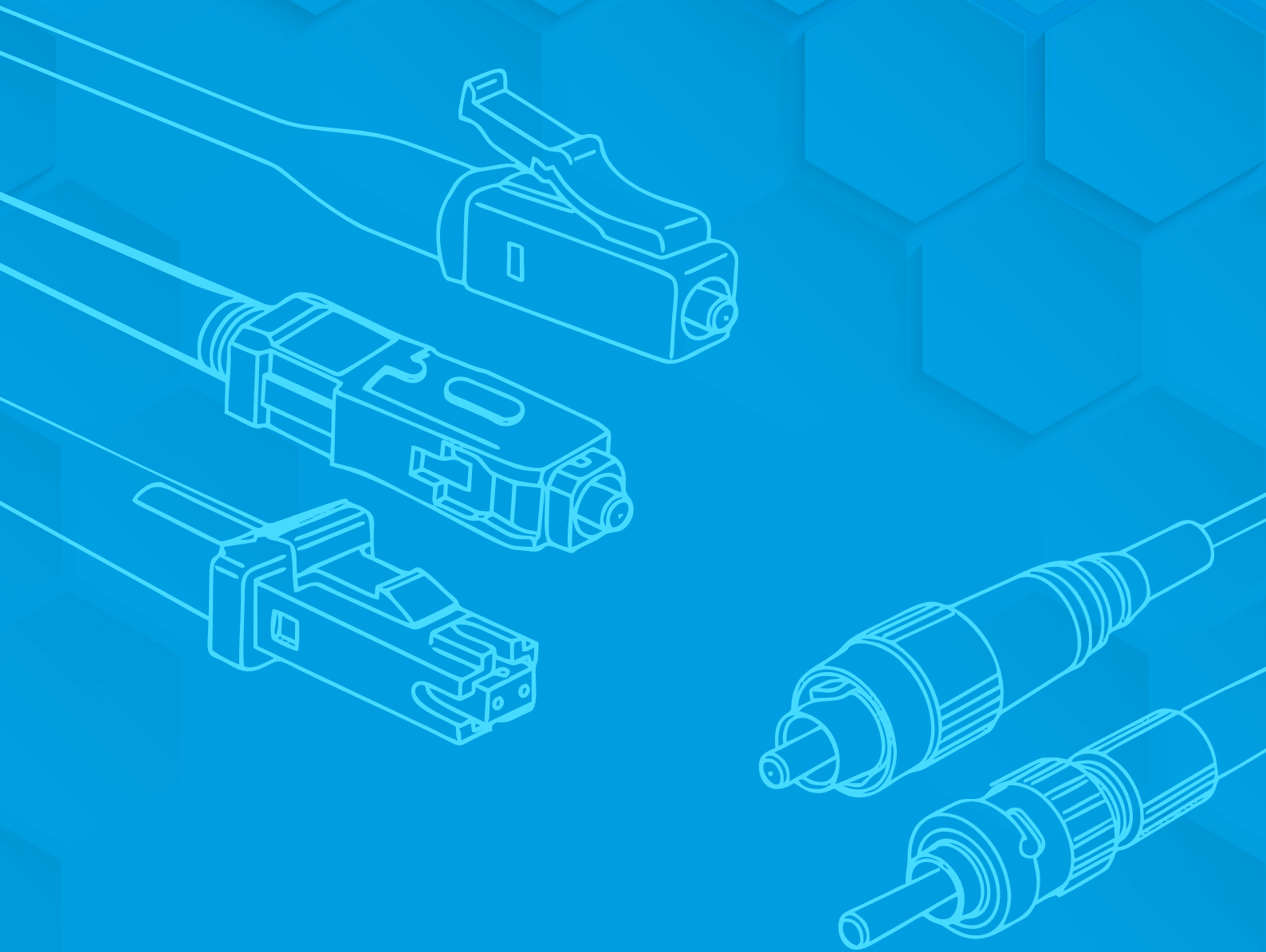
AE-SFP+ RJ45-10G

- SFP+-10GBASE-T Copper Small Form Pluggable (SFP) transceivers are based on the SFP Multi Source Agreement (MSA) .
- compatible with the 10Gbase-T / 5Gbase-T / 2.5Gbase-T / 1000base-T standards as specified in IEEE Std 802.3. SFP+-10GBASE-T uses the SFP's



AE-SMDG-LC-40-I

- **Industrial Grade SFP Module**
- Up to 40 km transmission on SMF
- Up to 1.25 Gbps
- 1550nm DFB laser and PIN receiver
- 2-wire interface for integrated Digital Diagnostic monitoring
- Hot pluggable
- Very low EMI and excellent ESD protection
- +3.3V power supply
- Power consumption less than 1.0W
- Operating case temperature: -40 ~ 85°C



Fiber Passive Products

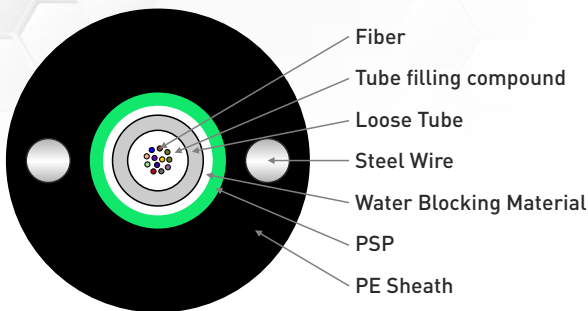
Optical Fiber Cable

Patch Cords

Fiber Adapters

LIU

Fiber Optic Pigtail



Single Mode Fiber Cables

- **Type** : Outdoor Fiber Optic Cable
- **Core** : 6, 12, 24
- **Colour** : Black
- **Loose Tube** : PBT
- **Jacket** : PE



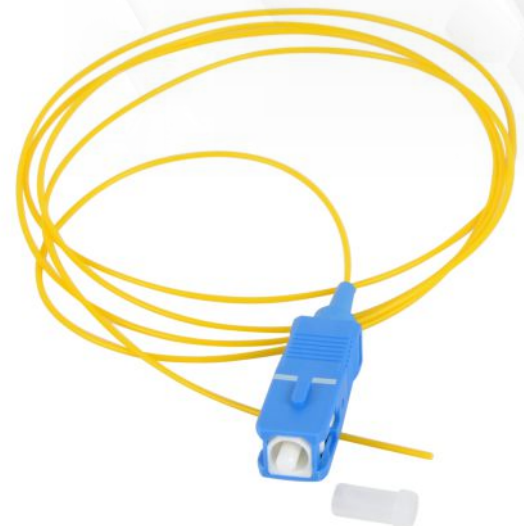
Fiber Patch Cord

- **Type** : Single Mode / Multi Mode
- **Core** : Simplex / Duplex
- **Connector** : FC, SC, ST, LC, MTRJ
- **Size** : 1Mtr, 2Mtr, 3Mtr, 4Mtr, 5Mtr, Customize Length available. Armoured Patch Cords available on order.



Fiber Aaptor

- **Type** : FC, SC, ST, LC, MTRJ
- **Mode** : Single Mode / Multi Mode
- **Core** : Simplex / Duplex



Fiber Pigtail

- **Type** : Single Mode / Multi Mode
- **Connector** : FC, SC, ST, LC, MTRJ
- **Size** : 1Mtr, 1.5Mtr, 2Mtr



AE-24FLIU

- Height : 1U (44.4mm)
- Dimension(cm) : 43.5 x 29.5 x 4.7
- Weight(Kg) : 3.5
- Colour : Black
- Material : Cold-roll steel
- Type : Drawer



AE-24FLIU-ECO

- Height : 1U (44.4mm)
- Weight(Kg) : 3.5
- Colour : Black
- Material : Cold-roll steel
- Type : Fixed



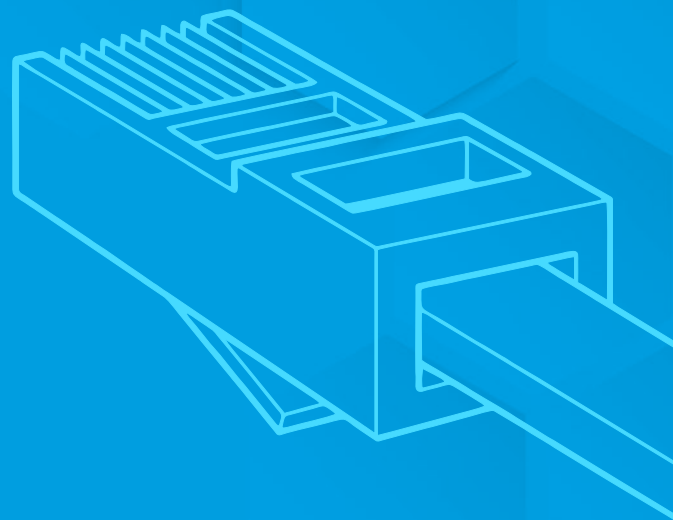
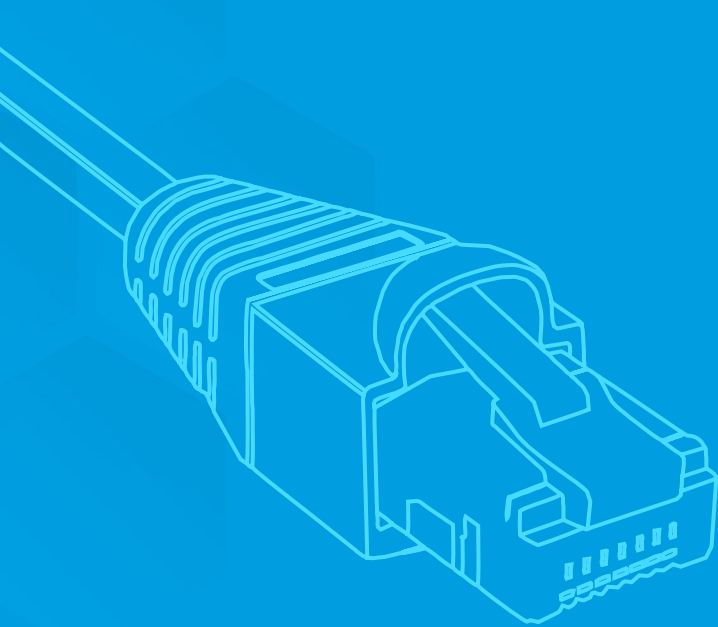
AE-ODF-48/96

- Standard size, light weight and reasonable structure
- Splice tray inside changeable
- Can be used in 19", 23" standard distribution frame
- Suitable for ribbon and single fiber
- Various panel plate to fit different adapter interface 24C, 36C, 48C, 72C, 96C optional, with or without fiber optic pigtails and adapters



AE-FDB-8C/16C/24C-SC

- Material : PC+ABS
- Protection Grade : Ip65
- Install : Wall Mounting Type And Pole
- Environment : Outdoor Or Indoor
- Sealing Method : With Key
- Function : Waterproof



Structure LAN Solutions

Cat 6 Cable

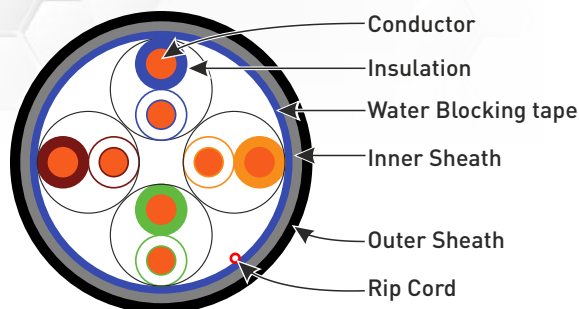
Key Stone Module

Patch Cord

Wall Plate

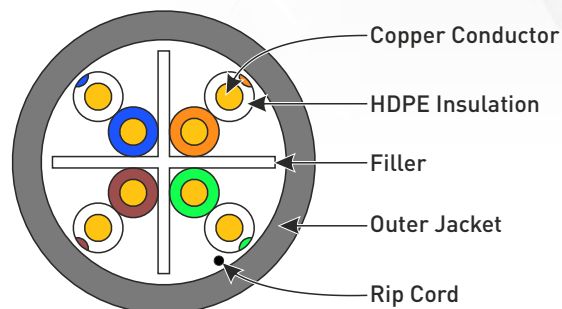
RJ45 Connector

Patch Panel



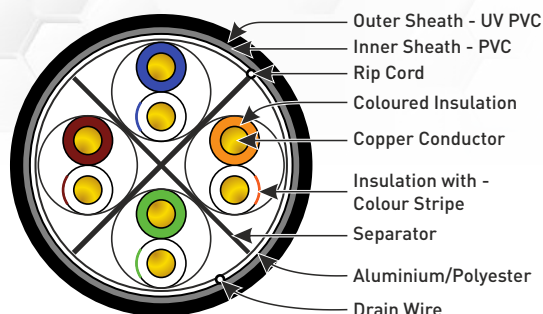
AE-C5E-OTD

- Cable Type : Cat5E Outdoor Double Coated
- Length : 305 Mtr (Wodden Box)
- Type : Outdoor
- Material : CCA



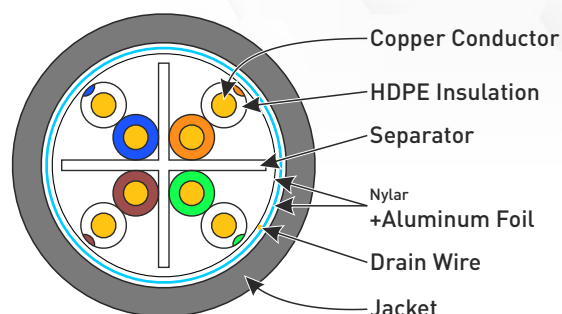
AE-C6BC-UTP

- Cable Type : Cat 6
- Connectors : Underminated
- Length : 305m (1000ft)
- Colour : Grey
- Jacket Material : PVC
- Diameter : 6.2mm



AE-C6-BC-FTP

- Cable Type : Cat 6 Outdoor
- Colour Code : Black
- Jacket Material : Double Sheath, PVC Inner
- Sheath : UV PVC Outer Sheath
- Drain Wire
- PE Central Cross separator



AE-CAT6A-FTP

- Cable Type : Cat 6A
- Material : FMPE
- O.D (mm) : 1.35 ± 0.05
- Shielding Layer
- Material : Aluminium Foil Sheath
- Thickness : 0.60 ± 0.05 mm
- Outer O.D : 7.4 ± 0.2 mm
- Material : LSZH
- Colour : Purple



AE-CCA6-SFTP

Cable Type: Cat 6
Material: CCA
O.D (mm): 8.1 ± 0.3
Aluminium Polyester Foil Shield
Drain Wire: 23 AWG
Insulation Material: HDPE
Colour: Black



AE-PP6xx-0.4M

- Unshielded Twisted Pair
- 4 Pair, 24AWG
- Stranded cable Cat 6
- Available Length : 0.4 to 20 MTR
- Colour Option : Multi Color Option



AE-PP6ASFTP-GREY-0.4M

- Unshielded Twisted Pair
- 4 Pair, 26AWG
- Stranded cable Cat 6
- Available Length : 0.4 to 20 MTR
- Colour Option : Grey



AE-PP6AUTP-1M

- Unshielded Twisted Pair
- 4 Pair, 28AWG
- Stranded cable Cat 6
- Available Length : 1 to 3 MTR
- Colour Option : Grey



AE-CONCAT6-B

- Used for Cat6
- 4 Pair, 26AWG
- Available in pack of 100
- For use in telephone & security installations
- For specialized telephone installations & communications equipment



AE-C6-SFTP

- Used for Cat6 and Cat7
- Available in pack of 100
- For use in telephone & security installations
- For specialized telephone installations & communications equipment



AE-C6CON-SFTP

- Used for Cat6
- Available in pack of 100
- For use in telephone & security installations
- For specialized telephone installations & communications equipment



AE-C6KEY-W-180

- Dual IDC : Krone or 110 Type Use IDC
- IDC Contacts : Phosphor bronze
- Dust Cap : Cable strain relief & Dust protection
- Performance exceeds TIA/EIA - 568A/B.2.1 Standards
- Colour Option : White, Yellow, Red



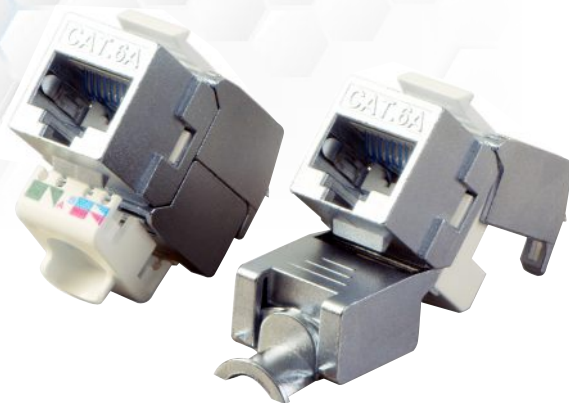
AE-C6BS-KEY

- **Dual IDC** : Krone or 110 Type Use IDC
- **IDC Contacts** : Phosphor bronze
- **Dust Cap** : Cable strain relief & Dust protection
- Performance exceeds TIA/EIA - 568A/B.2.1 Standards
- **Colour Option** : Black



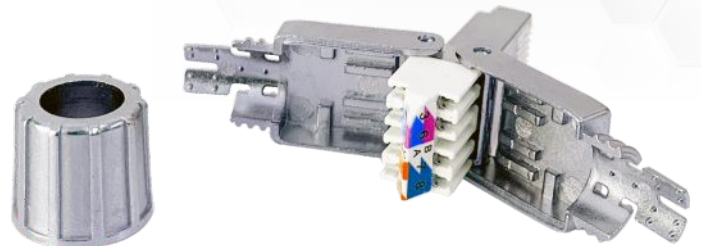
AE-C6KTL-90

- Ideal for standard keystone wallplates, patch panels and surface-mount boxes
- Terminate your Cat6 wall jack without using a punchdown tool
- Toolless punchdown connection compatible with 22-24AWG Solid Wire cabling
- RJ45 port compatible with all Cat6a cables
- Meets all EIA/TIA Cat6 requirements



AE-C6A-KEY

- Easy installation requires no punch down tool
- Use with a wall-plate for network wiring installs
- Designed for high-speed network applications
- Shielded STP Cover Designed for protection from external radiated noise
- Gold Plated RJ45 Contacts On the jack contacts for durability and a long lifespan
- T568A/B Wiring Scheme Color-wiring diagram for ease of installation



Cat6A SFTP

- Tool-free RJ45 network connector CAT6A STP shielded
- Easy and tool-free assembly
- Suitable for stranded cable (AWG22-27) or solid cable (AWG22-26)
- Accepts wires with conductor insulation diameter up to 1.65mm
- Transmission performance exceeds the requirements of Cat6A/Class EA
- Re-terminate up to 5 times
- Includes 568A/B and PNO wiring labels



AE-FPM-SLX

- **Material** : FLAME RETARDANCY ABS UL94V
- Single Modular Face Plate
- Standard 86 type
- **Colour** : White
- **Type** : Single



AE-FPM-DLX

- **Material** : FLAME RETARDANCY ABS UL94V
- Dual Modular Face Plate
- Standard 86 type
- **Colour** : White
- **Type** : Dual



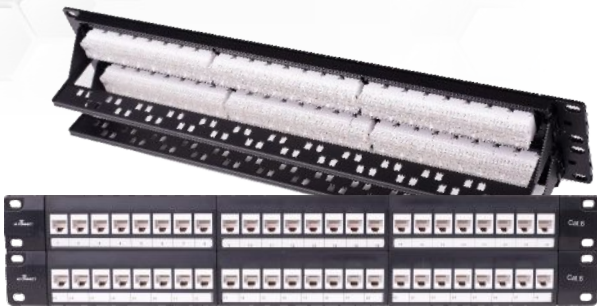
AE-FPM-QUAD

- **Material** : FLAME RETARDANCY ABS UL94V
- Quad Modular Face Plate
- Standard 86 type
- **Colour** : White
- **Type** : Quad(4)



AE-PP624

- Entire steel 24 ports UTP blank patch panel
- Material of Product Entire steel outer frame, with plastic powder clad.
- **Colour** : Black



AE-PP648

- Entire steel 48 ports UTP blank patch panel
- Material of Product Entire steel outer frame, with plastic powder clad.
- Colour : Black



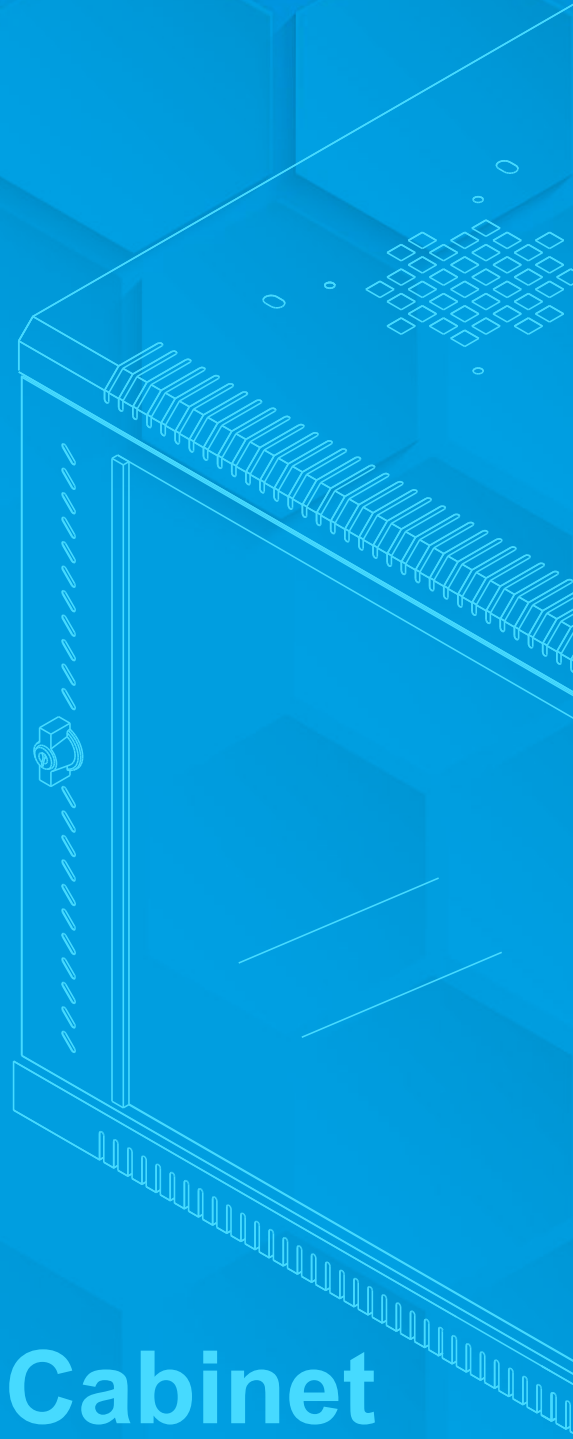
AE-PPAC6UTP

- 24-Port UTP Unloaded Patch Panel
- Suits to meet customized need of Cat.6A / Cat.6 / Cat.5E network
- Blank slot to fit data keystone
- 180 Degree punching type designed for network management
- Easy port labeling identification provision
- With back bar support for convenient cable management
- Standard 19" Rackmount (1U)



AE-CAT6APP-SFTP

- Support 10G Base-T
- Quick installation, no punch down required
- 19" rack mountable
- 24 ports in 1RU space
- Universal wiring blocks for easy termination
- Detachable rear cable management
- Loaded with removable and Interchangeable shielded toolless keystone jacks
- ISO/IEC11801, TIA/EIA568 standards Compliant
- Gold plated connection pins



Networking Rack Cabinet

Floor Mount Rack

Wall Mount Rack



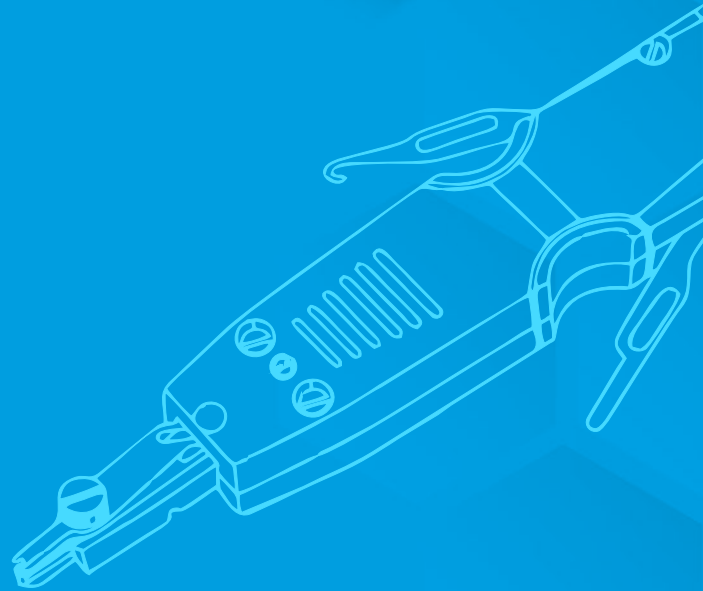
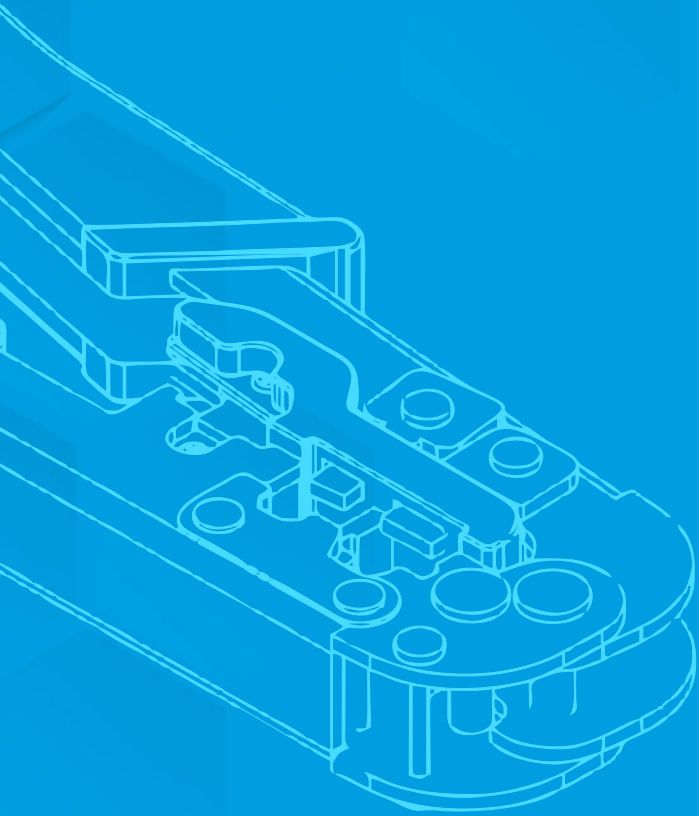
Floor Mount Racks

- Conforms to DIN 41494 – and current industry practices.
- Capacity to carry load of 500 Kgs and more.
- Finely styled with economy.
- Rear Doors – plain, vented at bottom, fully and dual perforated.
- Front Doors – glass or vented.
- Top and Bottom Covers with cable entry facilities.
- Choice of powder coat shades.



Wall Mount Racks

- The racks are available in either single or double section configuration
- Firm frame which can be fixed to a wall
- 19" rails in the front and rear which are adjustable
- Cable entry facility both at the top and bottom
- Locking facility with glass/acrylic door in front.



Networking Tools

CAT6 - Crimping Tool

Crimping Tool Cum LAN Tester

LAN and BNC Tester

Punch Down Tool



Crimping Tool with LAN Tester with Ratchet 10/8/6/4 Pin

- Testing for both UTP and STP Cat6, Cat5e, Cat5 Network Cable.
- Testing cable for continuity, opens, shorts and mis-wires
- Pin to pin indication
- Test mode selection for run once or test repeatedly
- Auto Power Saving
- Low Power indications
- Single and Multi-Wired Cable Crimping
- Modular Crimping Plugs: 10P10C/RJ50, 8P8C/RJ45, 6P6C/RJ12, 6P4C/RJ11, 4P4C & 4P2C/RJ22
- Embedded cable Stripper and Cutter



RJ45 RJ11 Cable Tester with BNC Pin

- Open / Short / Straight / Crossover.
- Network Telephone and Coaxial Cables (RJ45 RJ11 and BNC).
- Line DC detecting, anode and cathode determination, Ringing signal detecting open, short and cross circuit testing.
- 25mA
- 9V DC laminated battery
- Black + Red
- RJ45 to BNC cable
- CE & RoHS



Punch Down Tool

- Impact 110 & 88 type
- Hook and Spudger tools are built into the handle
- Use the hook to remove wires from any style block or to help trace wires.
- Use the spudger to remove the cross-connect module from the mounting bracket
- Adjustable spring impact mechanism.
- Allows low impact (LO=10±2kgs) for 24- and 26-gauge wire or high impact (HI=15±2kgs) for 22-gauge wire
- Convenient blade STORAGE built in the end of the handle
- All blades are interchangeable and reversible. Easy blade insertion and switch.
- Specially-made tool blade for durability
- Accepts standard industry blades
- Adapter blade allows technician to use a variety of torque tool bits and sockets
- Ergonomic Design for better grip and to reduce hand fatigue



CAT6 - Crimping Tool

- Crimp : UTP STP RJ45(8P8C), Rj11, RJ12(6P6C/6P4C), RJ22(4P4C/4P2C), Modular Plug & DEC/OFF SET Plug 6P4C
- Strip : Flat Telephone cable
- Design : Force-saving
- Material : Carbon Steel
- Length : 8.0" (203mm)



AE CONNECT INDIA PVT. LTD.

CIN: U31200GJ2022PTC132573

Regd. Address :

F/9-10, Balaji Centre, Opp. Gurukul Temple, Drive-In Gurukul Road,
Ahmedabad-380 052, Gujarat, INDIA.



+91 79 2749 6392



info@aeconnect.co.in



+91 95379 10555



www.aeconnect.co.in



9001:2015



14001:2015



27001



10002:2018

Specifications are subject to change without notice. AE CONNECT is a registered trademark of AE Connect India Pvt. Ltd. and its overseas subsidiaries. All other trademarks belong to their respective owners.
©2023 AE Connect India Pvt. Ltd. All rights reserved. E&OE.